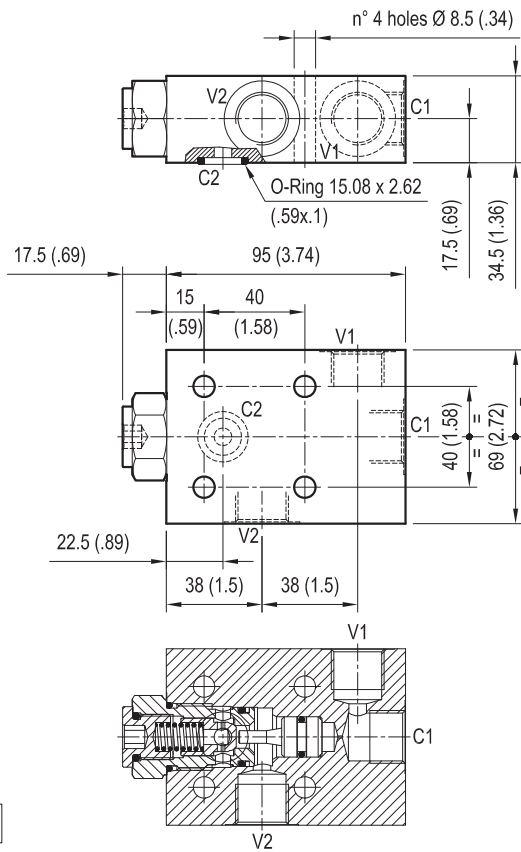


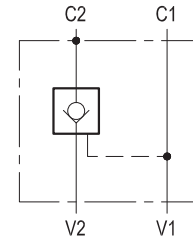
VSO-SE-FC1

05.52.02 - X - Y - Z



[mm (inches)]

Flow is allowed to pass from V2 to C2 when pressure at V2 rises above the spring bias pressure and the poppet is pushed from its seat. The valve is normally closed (checked) from C2 to V2; when sufficient pilot pressure is present at V1-C1 the pilot piston acts to push the poppet from its seat and flow is allowed from C2 to V2. Precision machining and hardening processes allow virtually leak-free performance in the checked condition. For better safety and compact assembly, the C2 port is flanged (gasket mounted) directly on the actuator.



TECHNICAL DATA

Operating pressure: up to 210 bar (3000 psi)

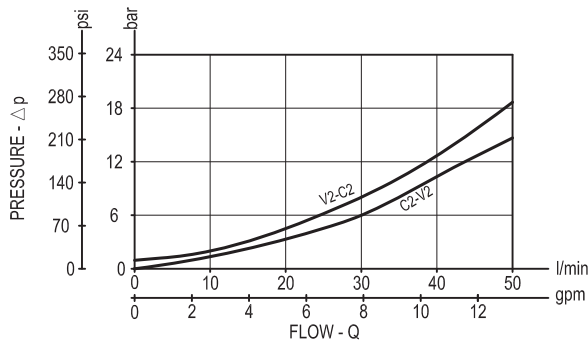
Max flow: 50 l/min (13 gpm)

Aluminium body

NOTE: aluminium bodies are often strong enough for operating pressures exceeding 210 bar (3000 psi), depending from the fatigue life expected in the specific application. If in doubt, consult our Service Network.

Weight: 0.72 kg (1.6 lbs)

The versions with O-Ring and heavier spring are generally recommended.



X	O-RING ON PILOT PISTON	PILOT RATIO
00	No O-Ring	3.2 : 1
10	With O-Ring	3.2 : 1
25	With O-Ring	6 : 1

Z	SPRINGS		
	Cracking pressure bar (psi)	Ordering code	
X=00 00	1 (15)	03.51.01.029	
X=10 01	8 (116)	03.51.01.058	
X=25 01	8 (116)	03.51.01.058	

Y	PORT SIZE	
	V1-V2-C1	C2
03	G 1/2	Ø 7 (0.28)